

3M Gel / Well Light Instructions

Step 1
Use the cardboard base provided with the well light so the fixture is in the upright position.



Step 2
Begin removing the 6 screws that secure the ring and glass to the fixture.



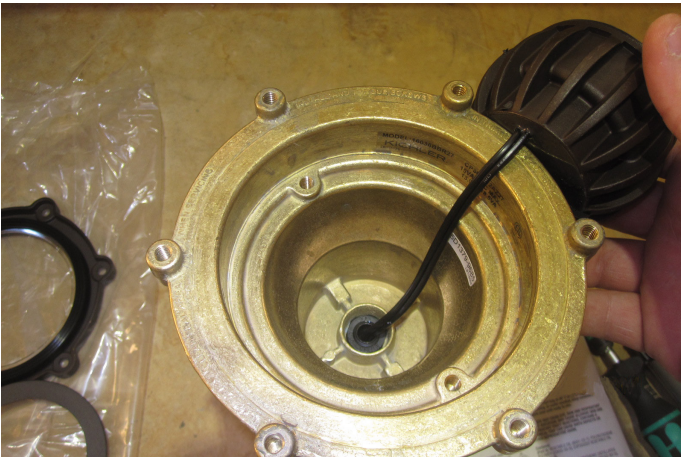
Step 3
Remove 2 screws from the inner ring that secures the sphere in place.
NOTE: Place the glass on top of a sheet of plastic to avoid scratching.



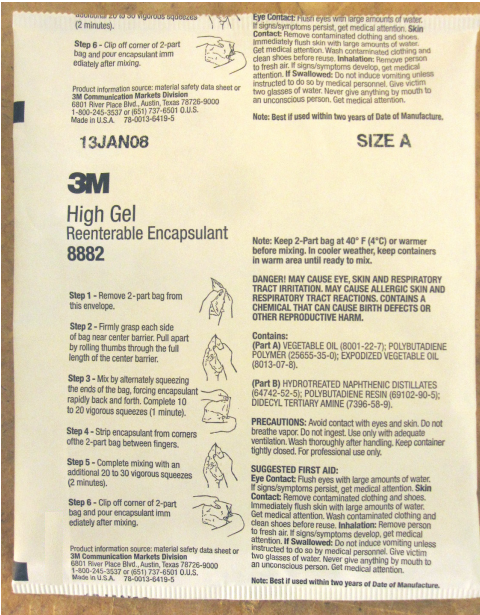
Step 4
Remove sphere securing ring.



Step 5
Gently (so the output wires do not damage the driver) lay the sphere on the side of the casting.



Step 6
Follow the instructions on the 3M Gel Pack.

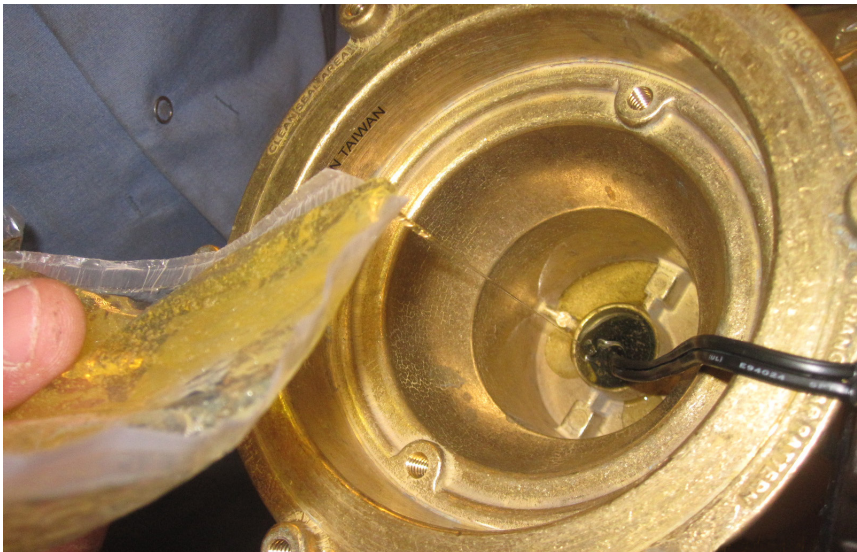


Step 7
Once the 3M Gel is mixed, cut a small corner off the pack so the gel can be poured from the pack.

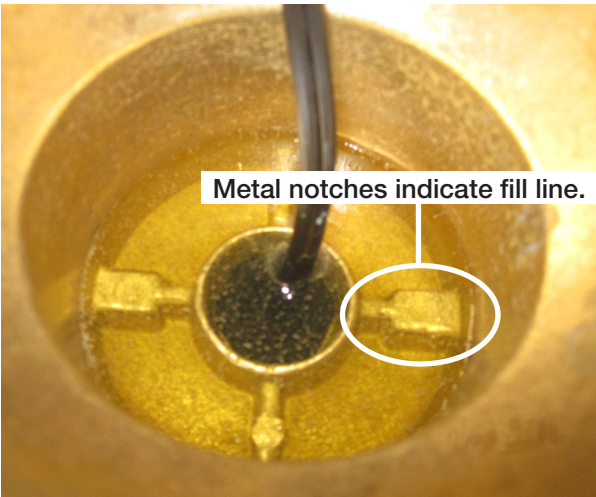
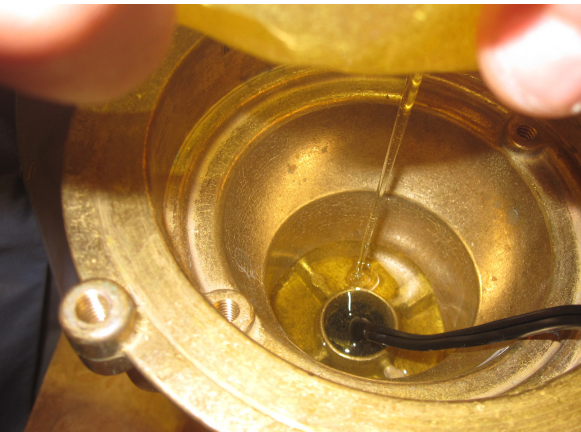


3M Gel / Well Light Instructions (Continued)

Step 8
Begin pouring 3M Gel into the bottom of the well where the strain relief and casting meet.



Step 9
Continue to pour 3M Gel. Fill cavity until the 3M Gel is slightly above the metal notches.



Step 10
For best results, allow 3M Gel to cure for 2-1/2 to 3 hours. Finished result should look like so:



Step 11
After the 3M Gel is cured, place the sphere in the cavity and begin tightening the securing ring.



Step 12
Using a torque screwdriver/torque wrench, set the torque to 20 in/lbs and begin tightening the screws in the “star” pattern as indicated in the instruction sheet.

